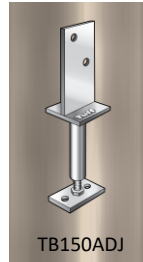
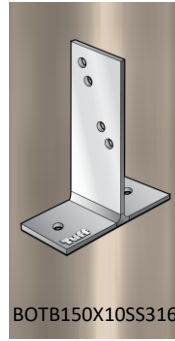
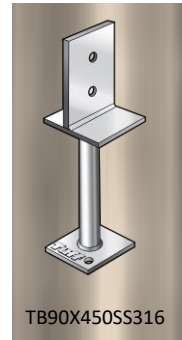
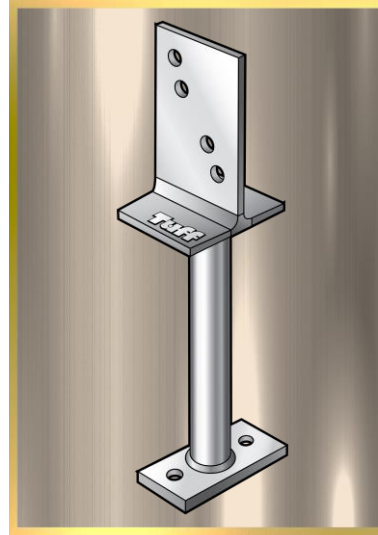


TB150X600SS316**T-BLADE STIRRUP, HEAVY DUTY 316 STAINLESS**

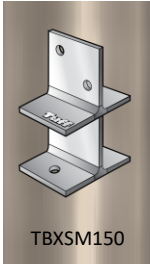
TB150ADJ



BOTB150X10SS316



TB90X450SS316



TBXSM150

PRODUCT CODE	: TB150X600SS316
BARCODE	: 9314691809233
POST SIZE	: UP TO 150MM
BLADE SIZE	: 130MM X 250MM
SHAFT HEIGHT	: 580MM
SHAFT Ø	: 46MM
POST BOLT HOLE	: M16
BASE BOLT HOLE	: 14MM
MADE FROM	: BLADE (10MM) + BASE (5MM)
FINISHING	: ELECTROPOLISHED

NOTES:

- MADE FROM 316 STAINLESS STEEL
- IDEAL FOR PERGOLA, CARPORT AND VERANDA POSTS
- USED FOR BOLTING TO EXISTING TIMBER DECKING OR CONCRETE BASE
- CAN ALSO BE USED FOR SETTING INTO CONCRETE
- HEAVY DUTY EXTRA WEIGHT BEARING SHAFT